

DOES THE INDIVIDUAL APPEAR TO BE AN IMMEDIATE DANGER TO SELF OR OTHERS?

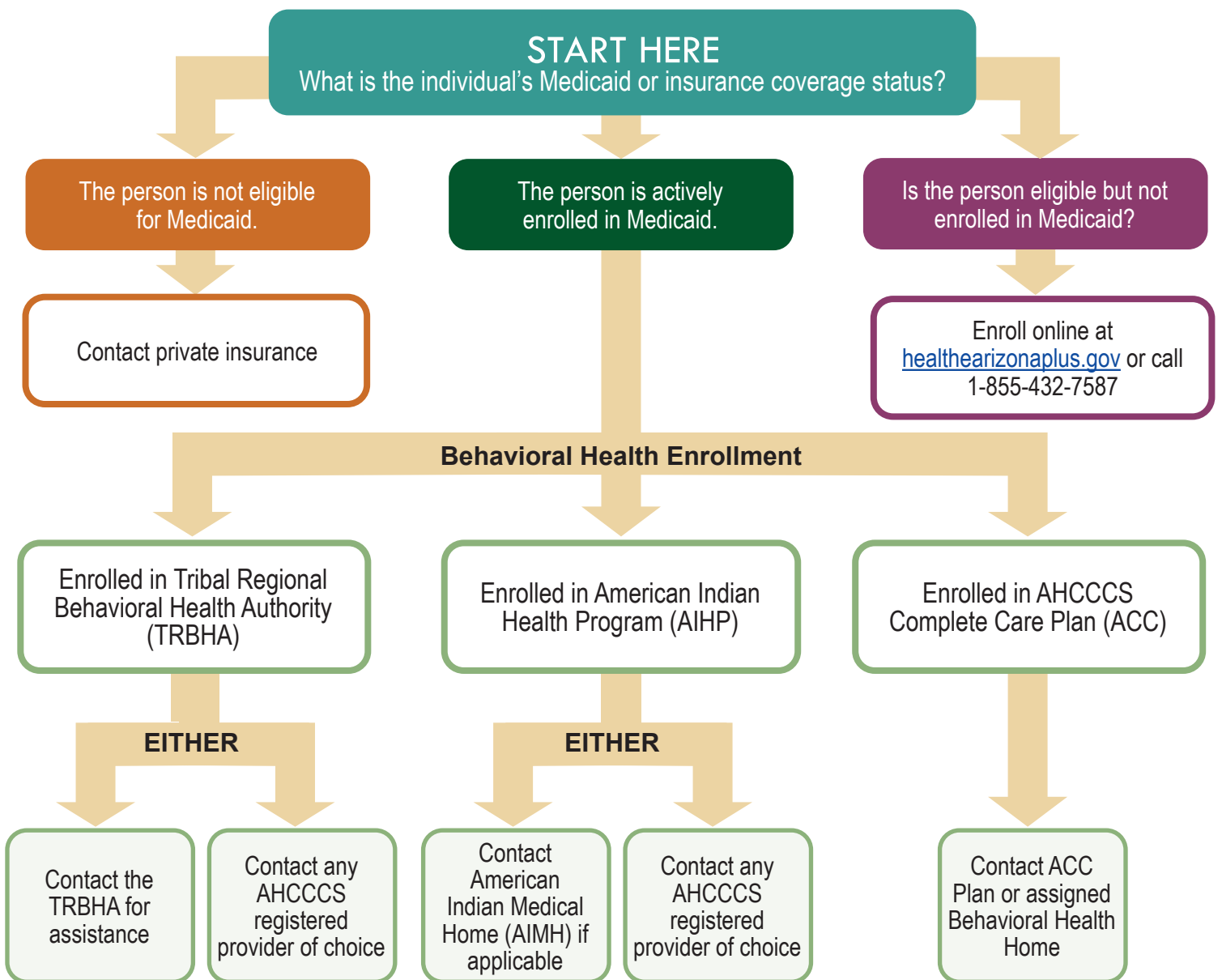
**CALL 911**

DOES THE INDIVIDUAL APPEAR TO BE IN NEED OF MENTAL HEALTH ASSISTANCE RIGHT AWAY?

**CALL 988 OR SEE CRISIS NUMBERS ON PAGE 2**

## How to Access Behavioral Health Service for American Indian/Alaska Native (AI/AN) Individuals

Regardless of insurance coverage, AI/AN individuals may always receive care at any Indian Health Service Facility, Tribally-Operated 638 Health Program, or Urban Indian Health Program (ITU). Contact the nearest ITU for assistance with behavioral health needs or referrals. Individuals may also access crisis services regardless of insurance coverage.



Suicide and Crisis Hotline by County	County or Tribal Nation Served
<b>Maricopa County:</b> 1-800-631-1314 or 602-222-9444	Maricopa County
<b>Arizona Complete Health- Complete Care Plan:</b> 1-866-495-6735	Cochise, Graham, Greenlee, La Paz, Pima, Pinal, Santa Cruz and Yuma
<b>Care1st ACC-RBHA:</b> <a href="http://www.care1staz.com">www.care1staz.com</a> , 1-866-560-4042	Mohave, Coconino, Yavapai, Navajo, and Apache
<b>Gila River and Ak-Chin Indian Communities:</b> 1-800-259-3449	Gila River and Ak-Chin
<b>Salt River Pima Maricopa Indian Community:</b> 1-855-331-6432	Salt River Pima Maricopa
<b>Indian Health Service (IHS), Tribally-Operated 638 and Urban Indian Health Programs (ITU) *For referral information contact the nearest ITU (see list below). If unsure where to go, contact the nearest IHS area office listed.</b>	<b>County or Tribal Nation Served</b>
<b>Navajo Area Office:</b> 928-871-5812/5813/5801	Navajo Nation
<b>Tucson Area Office:</b> 520-295-2405	Tohono O'Odham Nation and Pascua Yaqui Tribe
<b>Phoenix Area Office:</b> 602-364-5179 for behavioral health resource information	All other Arizona Tribal Nations
<b>IHS/Tribally-Operated 638/Urban Indian Health Program (ITU):</b> <a href="http://www.azahcccs.gov/AmericanIndians/AmericanIndianHealthFacilities/ITUsList.html">www.azahcccs.gov/AmericanIndians/AmericanIndianHealthFacilities/ITUsList.html</a>	See list for specific Tribal Nation served.
<b>Regional Behavioral Health Agreements (ACC-RBHAs)</b>	<b>County or Tribal Nation Served</b>
<b>Arizona Complete Health-Complete Care Plan ACC-RBHA</b> <a href="http://www.azcompletehealth.com/completecare">www.azcompletehealth.com/completecare</a> , 1-888-788-4408	La Paz, Pima, Yuma, Graham, Greenlee, Santa Cruz, and Cochise
<b>Mercy Care ACC-RBHA:</b> <a href="http://www.mercycareaz.org">www.mercycareaz.org</a> and 1-800-624-3879	Gila, Maricopa, Pinal
<b>Care1st ACC-RBHA:</b> <a href="http://www.care1staz.com">www.care1staz.com</a> , 1-866-560-4042	Mohave, Coconino, Yavapai, Navajo, and Apache
<b>Tribal Regional Behavioral Health Authority (TRBAs)</b>	<b>County or Tribal Nation Served</b>
<b>Gila River TRBHA:</b> <a href="http://www.grhc.org">www.grhc.org</a> and 1-888-484-8526 ext. 7100	Gila River Indian Community
<b>Navajo Nation TRBHA:</b> <a href="http://www.nndbmhs.org">www.nndbmhs.org</a> and 1-866-841-0277	Navajo Nation
<b>Pascua Yaqui TRBHA:</b> <a href="http://www.pascuayaqui-nsn.gov">www.pascuayaqui-nsn.gov</a> and 520-879-6060	Pascua Yaqui Tribe
<b>White Mountain Apache TRBHA:</b> <a href="http://www.wmabhs.org">www.wmabhs.org</a> and 928-338-4811	White Mountain Apache Nation
<b>AHCCCS Complete Care Plan (ACC Plan)</b>	<b>Geographic Service Area (GSA) Served</b>
<b>Care1st Health Plan:</b> <a href="http://www.care1staz.com">www.care1staz.com</a> and 1-866-560-4042	North, Central
<b>Health Choice Arizona:</b> <a href="http://www.healthchoiceaz.com">www.healthchoiceaz.com</a> and 1-800-322-8670	North, Central
<b>Molina Complete Care:</b> <a href="http://www.molinahealthcare.com">www.molinahealthcare.com</a> and 1-800-424-5891	Central
<b>Mercy Care:</b> <a href="http://www.mercycareaz.org">www.mercycareaz.org</a> and 1-800-624-3879	Central
<b>Banner-University Family Care:</b> <a href="http://www.bannerufc.com/acc">www.bannerufc.com/acc</a> and 1-800-582-8686	Central, South
<b>United Healthcare Community Plan:</b> <a href="http://www.uhcommunityplan.com">www.uhcommunityplan.com</a> and 1-800-348-4058	Central, South
<b>Arizona Complete Health-Complete Care Plan:</b> <a href="http://www.azcompletehealth.com/completecare">www.azcompletehealth.com/completecare</a> and 1-888-788-4408	Central, South

Find all AHCCCS registered providers at  
[www.azahcccs.gov/Members/ProgramsAndCoveredServices/ProviderListings](http://www.azahcccs.gov/Members/ProgramsAndCoveredServices/ProviderListings)