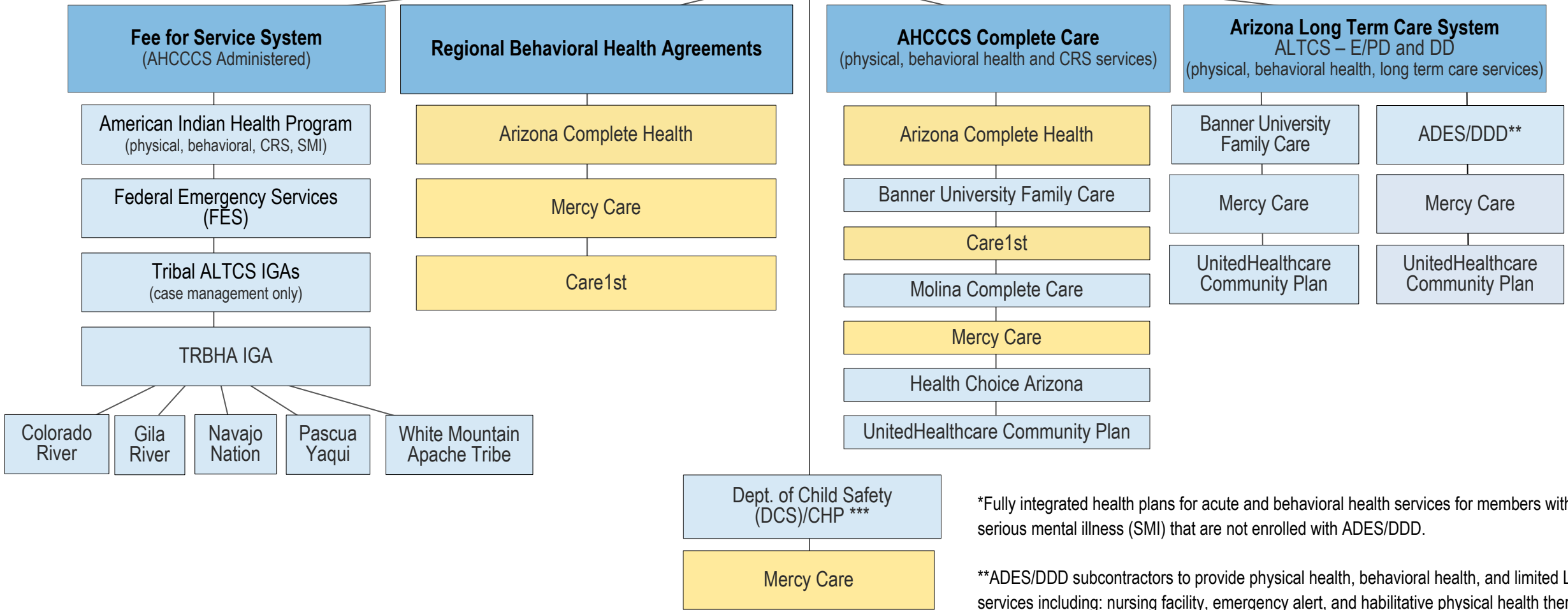


# AHCCCS



\*Fully integrated health plans for acute and behavioral health services for members with serious mental illness (SMI) that are not enrolled with ADES/DDD.

\*\*ADES/DDD subcontractors to provide physical health, behavioral health, and limited LTSS services including: nursing facility, emergency alert, and habilitative physical health therapy for members age 21 and over. ADES/DDD to provide all other LTSS and coordinate with AHCCCS' Division of Fee for Service Management to provide services for the Tribal Health Program for American Indian members.

\*\*\*DCS/Comprehensive Health Plan (CHP) statewide subcontractor to provide physical and behavioral health services.